

# KANSAS LOTTERY PICK 3™

Pick 3 is a Kansas-only game with a top prize of \$500. Play TWO times daily for a chance to win cash seven days a week for a total of 14 Pick 3 drawings each week.

## HOW TO PLAY:

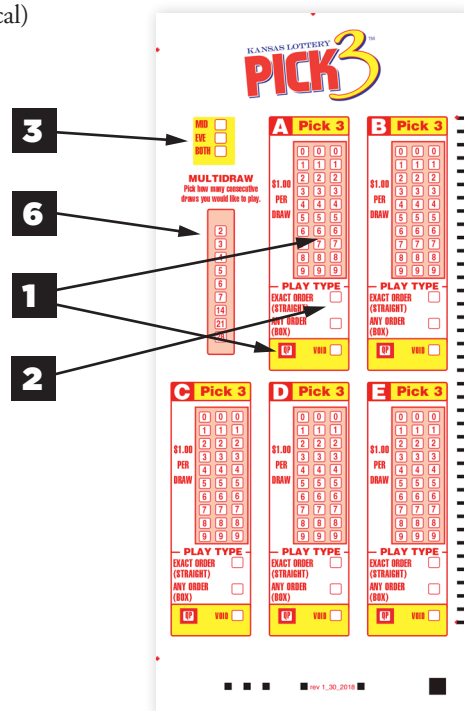
1. Ask the store clerk for a Quick Pick (QP) ticket or fill out a play slip. Each play slip has five boards. You may play from one to five boards. Each board contains three columns of numbers from "0" through "9." Select one number from each column. You can pick the same number once, twice or three times, or you can choose three different numbers. If you want the computer to randomly select your numbers, mark "Quick Pick" at the bottom of the board.
2. Select your play type "Exact Order" or "Any Order."\*
3. Select "MID" (Midday), "EVE" (Evening) or "BOTH" (Both) depending on the draw(s) for which you want your play to be eligible.
4. Each draw is a \$1 wager. For example, if you select "MID" or "EVE" only, your wager will cost \$1 per board played. If you select "BOTH" your wager will cost \$2 per board.
5. DO NOT USE RED INK; use only blue or black ink, or pencil. If a square is marked in error choose "VOID" for that board and move to the next board. DO NOT ERASE. Check the play slip carefully before presenting it to the retailer.
6. If you wish, you may purchase the same boards, play types, and wager for 2, 3, 4, 5, 6, 7, 14, 21, or 28 consecutive draws by marking the appropriate number of draws in the multi-draw area at the left side of the play slip. Multi-draw option applies to all boards played.
7. Before submitting the play slip, make sure the numbers, play type, wager, time of draw(s) and any multi-draw options are the ones you want.

**THERE ARE TWO DAILY DRAWINGS. DRAWINGS ARE HELD AT APPROXIMATELY 1:10 P.M. (CT) AND 9:10 P.M. (CT) SEVEN DAYS A WEEK.**

You have until 12:59 p.m. to purchase tickets for the Midday drawing.  
You have until 8:59 p.m. to purchase tickets for the Evening drawing.

## HOW TO WIN:

Type of Play	Example: You play	You win if we draw	Odds	Prize
"Exact order" (straight)	123	123	1:1,000	\$500
"Any order" (6-way box)	123	123, 132, 231, 213, 321, 312	1:166.67	\$80
"Any order" (3-way box) (When two or three digits are identical)	112	112, 121, 211	1:333.33	\$160



\* Exact order (straight): For a \$1 wager, if the three numbers drawn match your numbers in exact order, you win \$500.

\* Any order (3-way box): For a \$1 wager, if the three numbers drawn match your numbers in any order, you win \$80. Win \$160 for matching your three numbers in any order when two or three of the three numbers selected are IDENTICAL.

**PLAY TWICE A DAY!**

